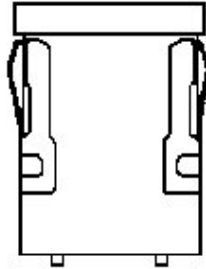




AML41FBA2 MICRO SWITCH™ Pushbuttons and Manual Switches



AML41 Series, Solid State Indicator, Rectangular, Pushbutton Style, Lighted, 1 Incandescent Lamp, Snap in panel mount

Actual product appearance may vary.

RoHS compliant

Product Features

Features

- Pushbutton style indicators match AML series standard bezel lighted switches
- Snap-in surface mount
- UL recognized, CSA certified
- Metric design for world wide acceptance

Potential Applications

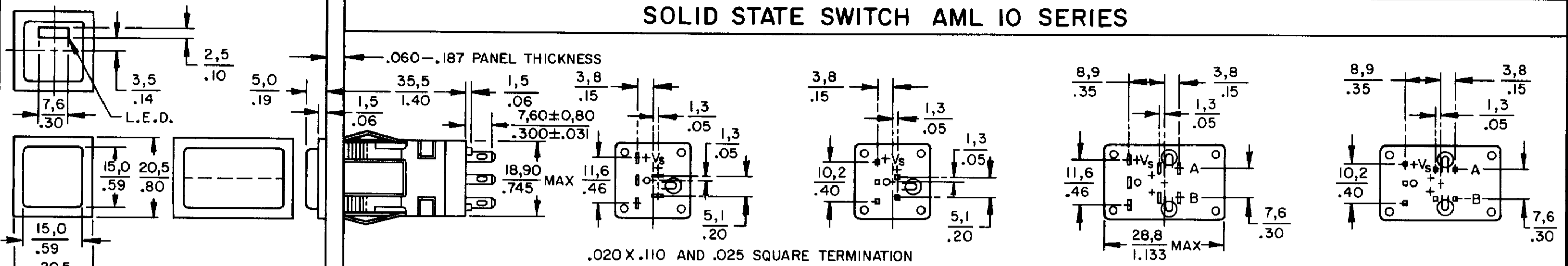


Product Specifications

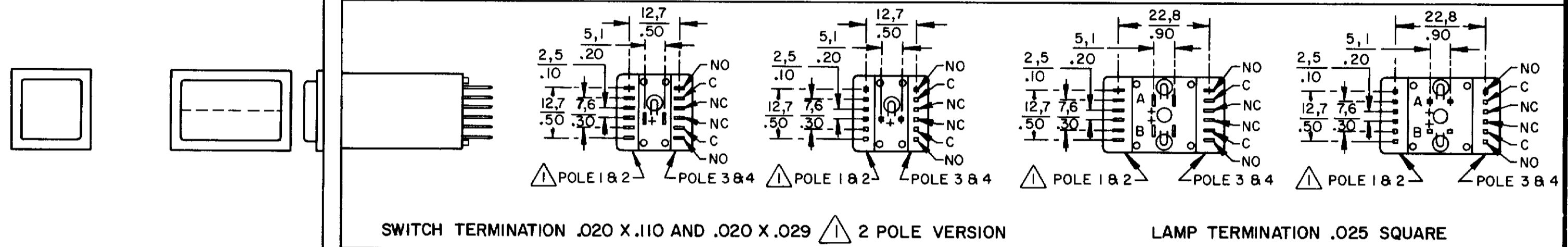
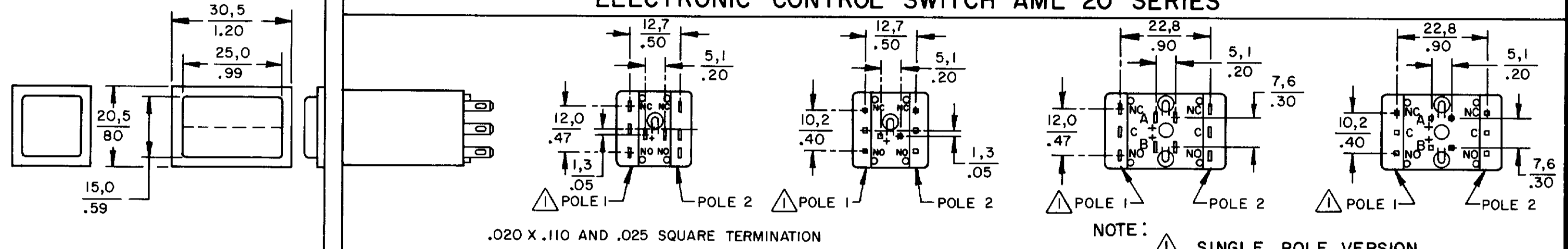
Product Type	Indicator
Housing Type	Rectangular
Mounting	Snap-in Panel
Lamp Type	Lighted, 1 Incandescent Lamp
Termination	.110 x .020 (Solder or Quick-Connect)
LED/Lamp/Neon Voltage	No Lamp Installed
Comment	use AML51 button
Availability	Global
UNSPSC Code	30211913
UNSPSC Commodity	30211913 Push button switches
Series Name	AML41

AML PUSHBUTTON AND INDICATOR SERIES

SOLID STATE SWITCH AML 10 SERIES

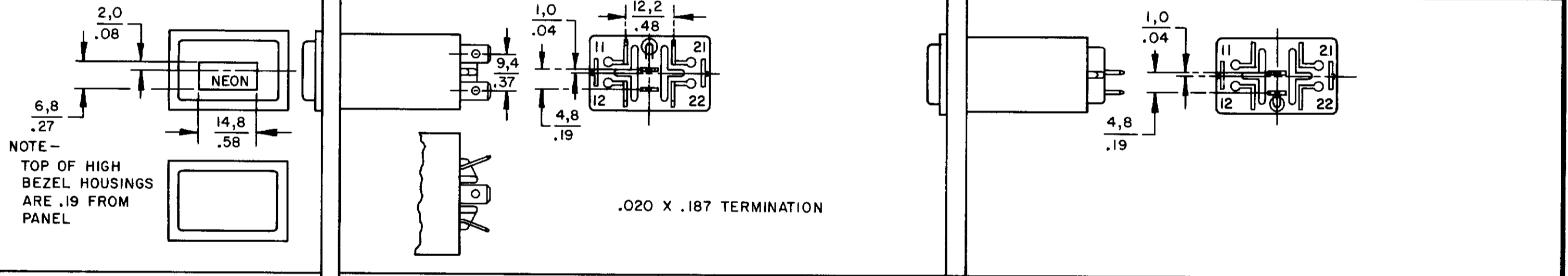


ELECTRONIC CONTROL SWITCH AML 20 SERIES

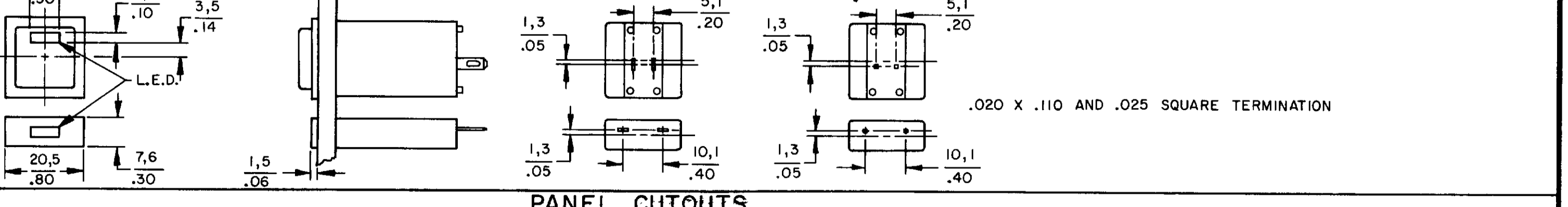
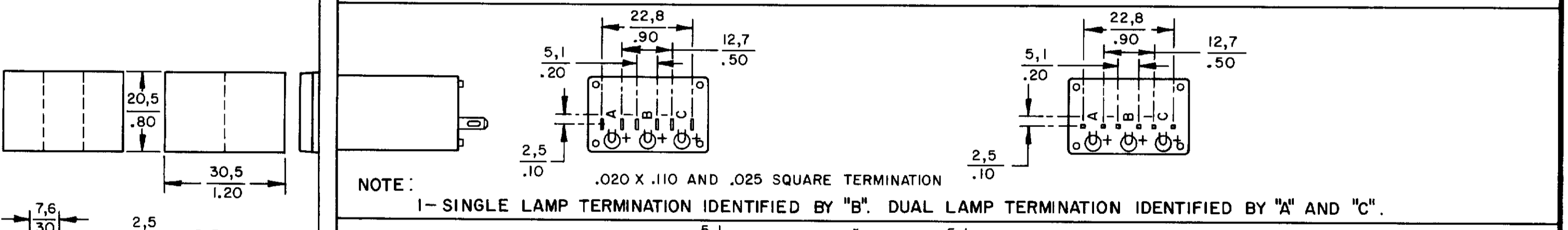
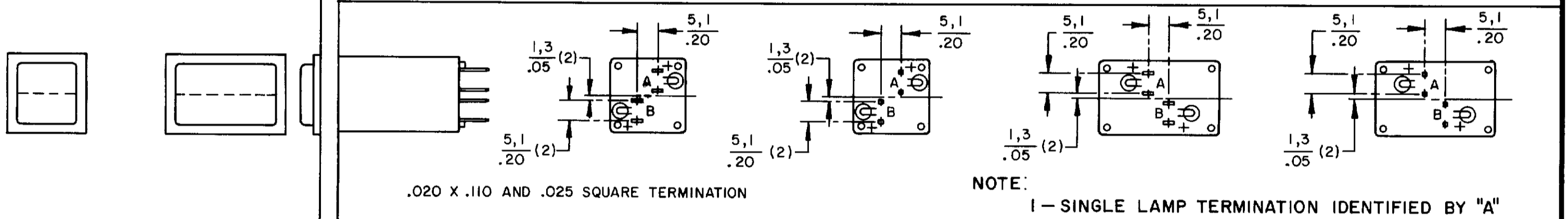


POWER SWITCH AML 30 SERIES

LINE POWER IND AML 43 SERIES



INDICATORS AML 40 SERIES

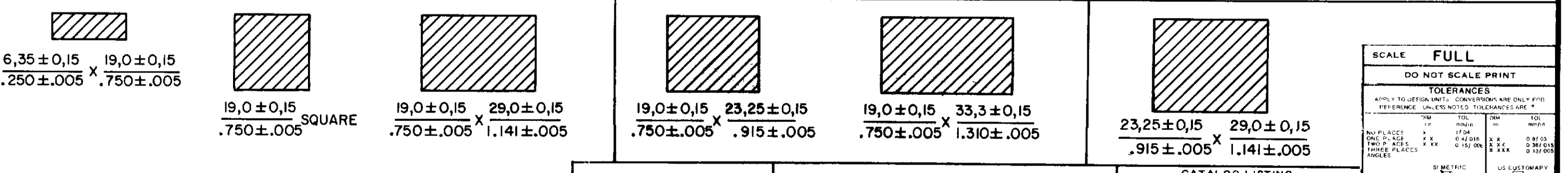


PANEL CUTOUTS

WITHOUT BARRIERS

SHORT BARRIER

LONG BARRIER



SCALE FULL	
DO NOT SCALE PRINT	
TOLERANCES	
APPLY TO DESIGN UNITS. CONVERSIONS ARE ONLY FOR REFERENCE. UNLESS NOTED, TOLERANCES ARE:	
FRAMES	± .005
NO PLACES	± .005
ONE PLACE	± .005
TWO PLACES	± .005
THREE PLACES	± .005
ANGLES	± .005
DESIGN UNITS	<input checked="" type="checkbox"/> METRIC <input type="checkbox"/> US CUSTOMARY
THIRD ANGLE PROJECTION	
WEIGHT	

CATALOG LISTING AML 10 20 30 40
 PAGE 1 OF 1 SERIES CHART 1
 RELEASE NO CO-78498 REPLACES & 40 SERIES
 ISSUE 6
 REVISIONS:
 A 209297 6 J W 8 JUL 89
 B 201477 6 J W 9 OCT 00
 C 201566 C S L 20 OCT 00
 D 201696 D J V 00
 E 202971 C S L 30 APR 01
 DRAWN JAK 17 JUN 94 CHECK JAF 11 JUL 04
 RASTER